



CPS Knowledge Organiser
 Still Life
 Art Skills: **Drawing + Painting**

Van Gogh Artist Profile:
 Still Life: Everyday objects found at home
 Media used: Oil Paint/Pastel/Drawing Pencils
 Art Movement: Impressionism
 Key Concepts: Same colours in the foreground and background-blurry figures/the impression of figures with colour loosely outlined

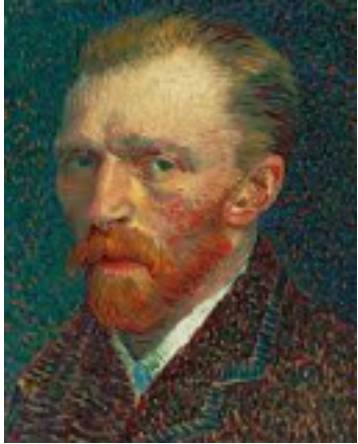
Van Gogh

Van Gogh + Bambou Gili

Key words:
 Observation - How something looks
 Proportion - Is it the right size compared to other objects?
 Realism - Does it look real?
 Perspective - How does it look from this angle?
 Focal Point - Something that stands out
 Composition - How it is made?
 Foreground - Near the front
 Middleground - In the middle
 Highlight - Lightest part
 Figurative - Does it have another meaning?

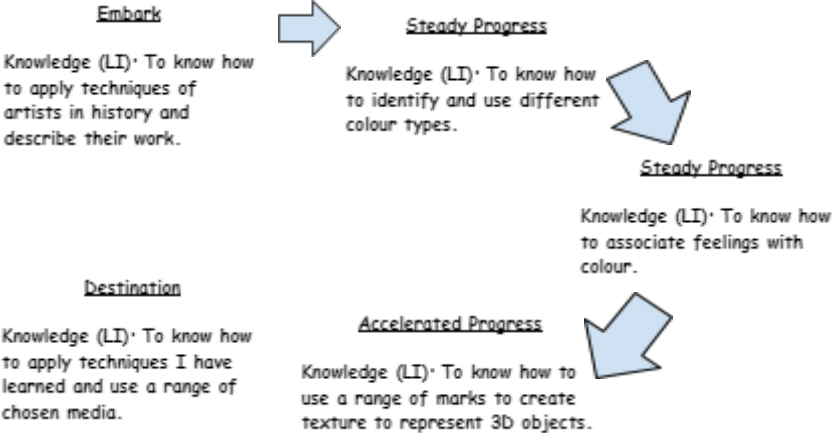
Media:
 Acrylic/Water colour Paint
 Drawing Pencils
 Colouring Pencils

Oil Pastels
 Chalk
 Putty Rubber
 Charcoal



Bambou Gili Artist Profile:
 Still Life: Includes manmade natural objects
 Media used: Oil Paint
 Art Movement: Surrealism
 Key Concepts: Fruit/Man made items

Bambou Gili





CPS – Knowledge Organiser

Geography Focus

South America (Brazil)

Year 3

Autumn 2

What? (Key Knowledge)

Basic Facts

Continent: South America
Country: Brazil
Capital: Brazillia
Currency: Brazilian real
Language: Portugese

Flag



Human Feature

Indigenous cultures and persecution.
Urban migration and urbanisation
The expansion of the farming industry causing deforestation.

Physical Features

Amazon river (the longest in the word), and the Amazon rainforest are located there.

Climate

The climate of Brazil varies considerably, from tropical areas in the North, to more temperate zones South of the Tropic of Capricorn

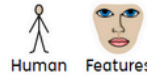
Global Issues

Persecution of indigenous tribes in the Amazon rainforest.

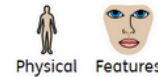
Destruction of the natural habitats to give space for farming.

What? (Key vocab)

Spelling



A manmade feature (cities, roads, farming)



A natural feature on the environment (mountains, beaches, forests)



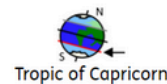
The movement of people within a nation



The destruction of vegetated areas



Naturally occurring fires brought on through dry, hot weather



An imaginary line south of the Equator



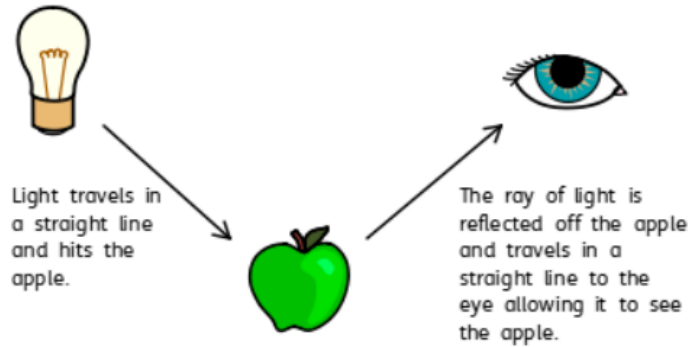
The long-term changes in global temperatures and other characteristics of the atmosphere.



Key Vocabulary
 Light sources- Places from which light is shown/created e.g. sun, candles, torches, fire.
 Shadow- A dark area or shape produced by an object blocking the rays of light and a surface.

Light and Shadow

How does light travel?

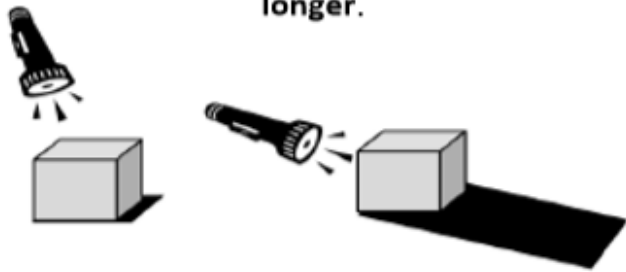


Translucent, Transparent & Opaque

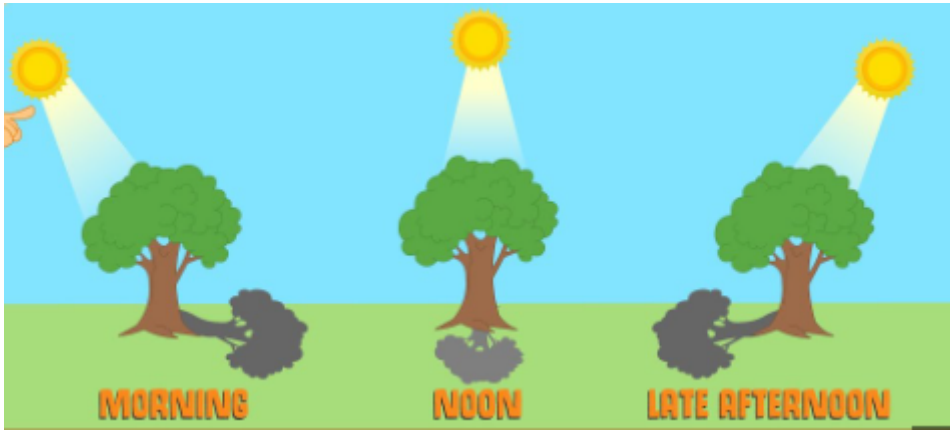


Why do shadows change shape?

As the **light source** moves **higher** in relation to the **object**, the **shadow** gets **shorter**. As the **light source** moves **lower**, the **shadow** gets **longer**.



How do shadows move?





Christianity - Christmas

Key question. 'Has Christmas lost its true meaning?'

Christian Symbols

Presents

Christmas tree

Advent candle

Christingle

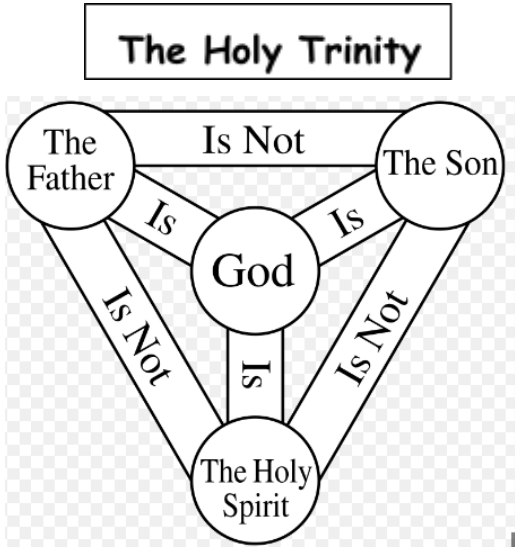
Christmas star

Fir tree

Candy cane

Jesus Christ

Holly



Miracles



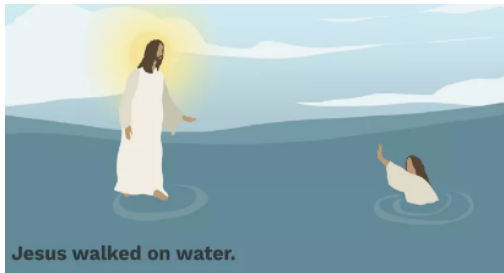
Jesus heals the blind



Jesus turned water into wine.



Jesus heals a paralyzed man



Jesus walked on water.